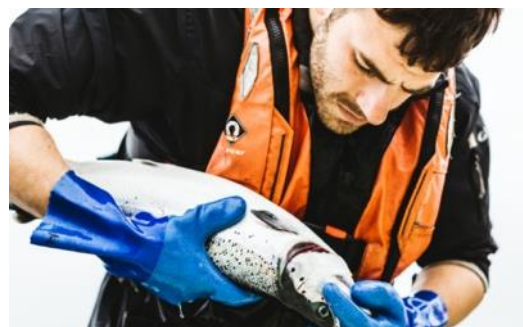


# Toyneess Farm Expansion



July 2021



# Background

In 2007, Scottish Sea Farms bought five existing Orkney salmon farms. We invested in bringing each farm up to the same high standards as our other farms: infrastructure, equipment, staffing, health and safety, training and development. With the local knowledge gained, we then researched other good farming locations, resulting in the development of four new farms. The ambition? To grow a quality of salmon befitting of the region's reputation for premium food and drink, which our Orkney farms have a proven track record of delivering, while also growing the economy, benefiting the local and wider supply chain and creating skilled jobs.

Our teams work diligently to farm evermore responsibly and sustainably. Our Orkney farms have an excellent performance history in terms of production and fish welfare and our teams have achieved a 95% average fish survival rate across our farms.

# Toyneess Farm

The Toyneess farm is located is located along the coast between Houton Bay and Swanbister Bay and has been in operation since 2000.

Detailed modelling shows that the environment has the capacity to sustainably support a larger farm at Toyneess. To accommodate an increase in production we would need to reconfigure and expand the farm, replacing the existing equipment with larger cages and a feed barge with a larger storage capacity.



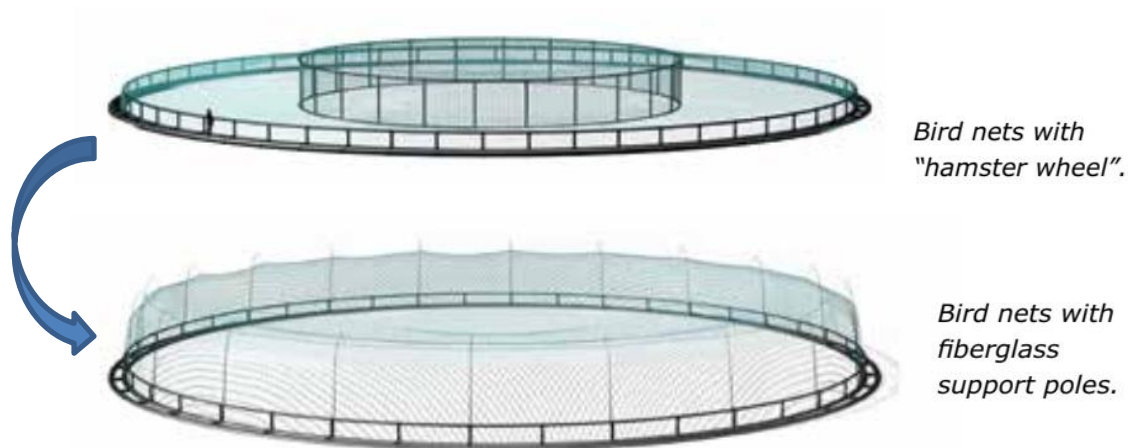
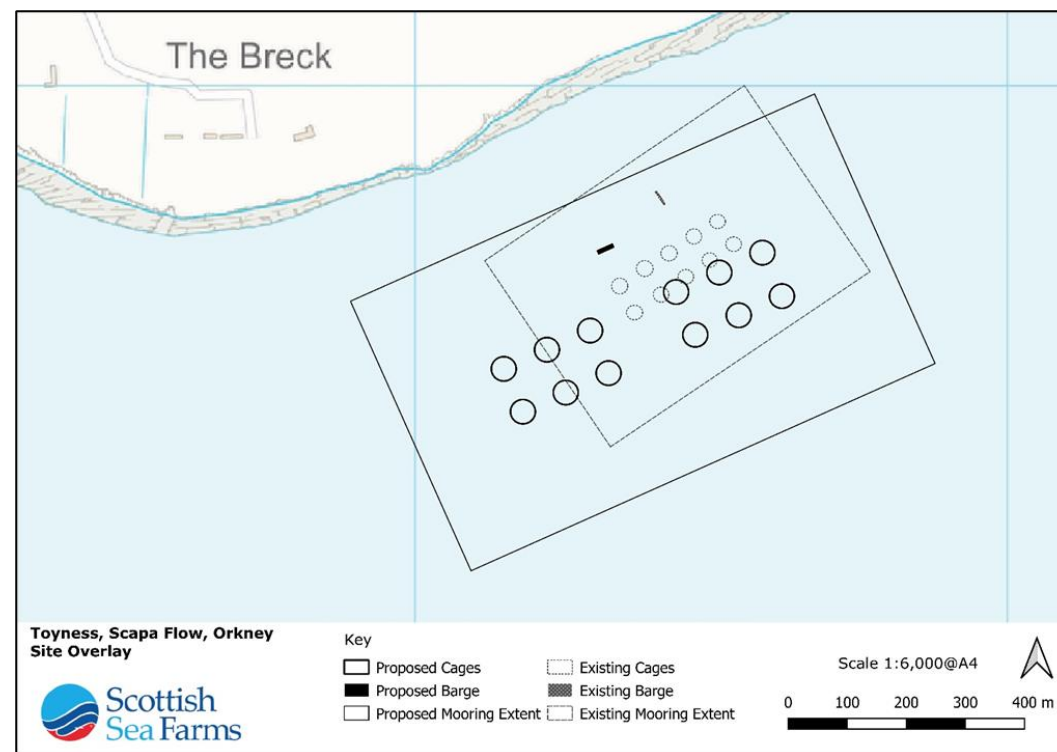
# Toyness Expansion Proposal

## Existing

10 x 80m cages in a 50m mooring grid  
 200 tonne capacity feed barge  
 Surface area of 5,270m<sup>2</sup>  
 1343 tonnes maximum biomass  
 Hamster wheel top nets  
 Seal Pro cage nets  
 No acoustic deterrent devices used

## Proposed

12 x 120m cages in a 80m mooring grid  
 420 tonne capacity feed barge  
 Surface area of 14,065m<sup>2</sup>  
 2500 tonnes maximum biomass  
 Pole-mounted top nets  
 Seal Pro cage nets  
 No acoustic deterrent devices to be used





# How will the proposed expansion affect the landscape?

The proposed cages would be slightly higher than the existing cages due to the proposed use of pole-mounted top nets instead of the traditional hamster wheel top nets. A single grid with 14 grid spaces is proposed however only 12 of the grid spaces will be filled leaving empty spaces. This would result in a visual arrangement of two groups of six cages broadly aligned parallel to the coast. The new feed barge would be positioned on the shore side of the farm. The proposed replacement feed barge would be designed to appear like a boat. Farm cages, nets and the feed barge will be of dark matt colours.

Toyness is not located within a National Scenic Area and the additional extent of theoretical visibility of the proposed expanded farm is principally limited to small areas of Orphir. Landscape visualisations on the following slides show a before (existing farm) and after (proposed expanded farm) view of Toyness from the most sensitive viewpoints.

# Visualisations

- Coastal path east of Orphir Bay
- 0.6km from the Toyness farm
- Close eastward views of the farm from a promoted circular coastal walk



# Visualisations

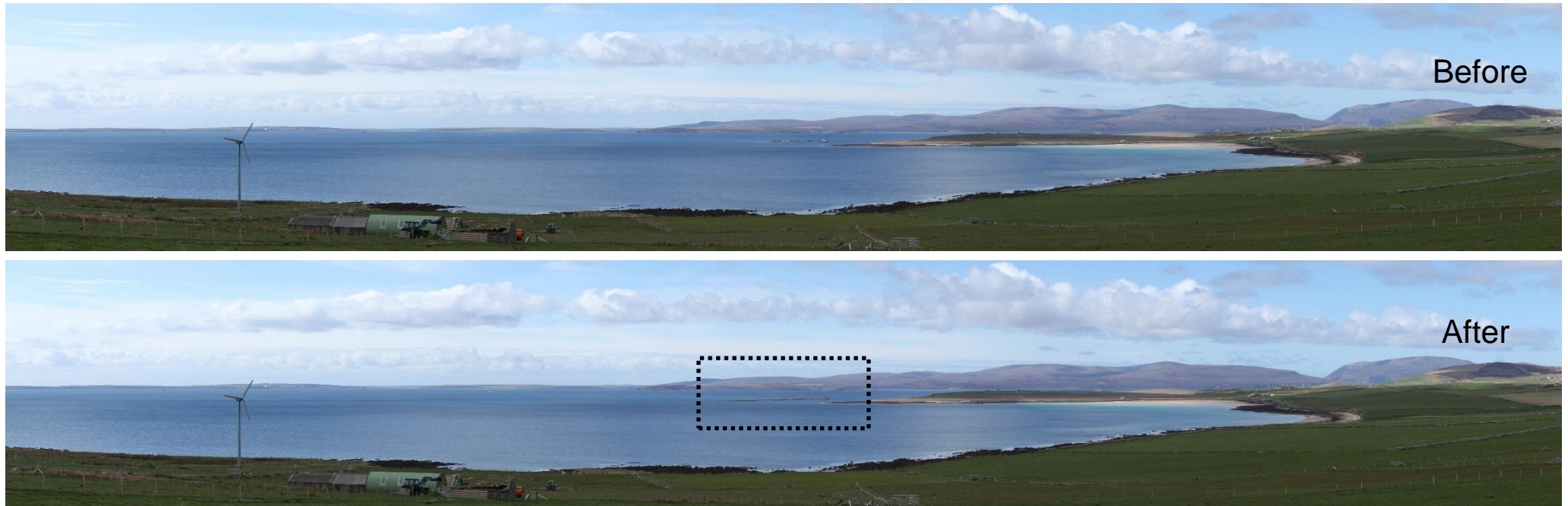
- Coastal path west of Swanbister Bay near Toy Ness
- 0.4km from the Toyness farm
- Close westward views of the farm from a promoted circular coastal walk





# Visualisations

- Smoogro Road
- 2.6km from the Toyneess farm
- Elevated views from the minor road and nearby residential properties
- The black outline indicates the location of the expanded Toyneess farm





# Visualisations

- Access track off the A964 near Swanbister
- 2.4km from the Toyness farm
- Elevated views from the access track to Swanbister House just off the A964 which is representative of views from residential properties
- The black outline indicates the location of the expanded Toyness farm



# Visualisations

- Hobbister Nature Reserve
- 4.4km from the Toyness farm
- Views from the RSPB Reserve walking route
- The black outline indicates the location of the expanded Toyness farm

Before



After



# Will the expanded farm result in an increase in farm lighting?

Lighting on the current farm includes the following:

- Navigational lights as required by the Northern Lighthouse Board - a marker buoy on the north and west corners of the cage group and a fixed all-round light on the feed barge with a nominal range of 2 nautical miles.
- Underwater cage lighting used during the winter months (December to April) every second year. These downward facing lights are installed 6m below the water surface and result in a slight underwater illumination with minimal visibility from the surface.
- Occasional use of downward facing deck safety lighting on visiting vessels and the feed barge would be limited to normal working hours for a farm (8am to 5pm) and very occasional activity outwith these hours. In the winter months there would be some, but limited overlap between normal working hours and periods of dark or low lighting where safety lighting may be necessary on vessels.

The proposed expansion of the farm would not result in any change to the normal working hours for farm operations or frequency of vessels and therefore no change in lighting levels or duration is anticipated. There will be no obvious difference in navigational lighting for the proposed expanded farm as the same number and type of navigational lights would be in use. The proposed expanded farm would use the same type of underwater cage lights as currently used but with 12 cages instead of the current 10.

# Will the expanded farm result in an increase in noise?

Potential noise sources on the current farm include cranes, generators and associated hydraulic systems, and feed blowers on supporting vessels and the feed barge. The same vessels that service the existing farm will service the proposed expanded farm and the same feeding system will be used, other than it being housed within a new and higher specification feed barge than the existing barge. Generators and feed blowers used in the feeding system will be housed within the new barge within sound-proofed compartments.

The frequency of site vessels bringing site staff to and from the farm and visits from supporting maintenance and treatment vessels will not change. The frequency of feed deliveries and well boat trips for harvesting will also not increase despite the increase in biomass as the new feed barge will have an increased capacity to store feed and the well boats have available capacity to harvest a larger tonnage of salmon during each visit.

The proposed expansion is therefore not anticipated to result in any increase in noise levels compared to the operation of the existing farm.